



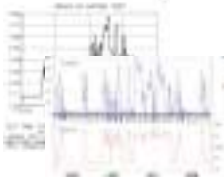
## WESWORTH ELECTRIC

POMPANO BEACH, FLORIDA

[WWW.WESWORTH.COM](http://WWW.WESWORTH.COM)

(954) 545-8171 BOCA: (561) 279-2929 BOYN: (561) 374-9500

# Power Analysis & Consultation



Wesworth offers electrical analysis for customers looking to learn more about power **quality** and power **quantity** issues.

Typically Wesworth can analyze the **quality** of your power to look for transients, surges and slags on your entire service.

Also Wesworth can address **quantity** issues concerning kW demand, kWh and peak and off peak uses.

## About of Services and Equipment

Wesworth's analytical team is composed of Master Electrician **Wesley Shreve**, Technical Consultant, **Rhey Hedges** and Master Electrician **Charles Triglianos**.

Combined they bring years experience of power quality analysis, diagnosis, troubleshooting, mitigation techniques and practical real world problem solving to your project.

Our tools include utility grade data loggers from Drantez and Metrosonics. We also utilize our lab at Wesworth to test and evaluate power solutions



## Results and Reports



Regardless whether the analysis is for power **quality** or **quantity** issues, Wesworth presents professional yet easy-to-understand reports.

We provide scientific-grade data charts and highlight relevant findings so you can share our results with engineers, utilities and manufacturers.

Finally, our analysis include recommendations from our team and more importantly a commitment to work with you to utilize our findings.

## Costs

Historical or Data Logging Analysis on a panel, meter or piece of equipment is priced starting at **\$575**. This includes, setup, 7 day recording, retrieval, basic analysis and summary reporting.

If need multiple location recording, short duration (<1 day), long duration (>30days) analysis, drawings or full reporting, there may be additional charges. We look forward to you contacting us directly to see how Wesworth can assist you with your Power Analysis goals.