

Thermal Imaging \$99

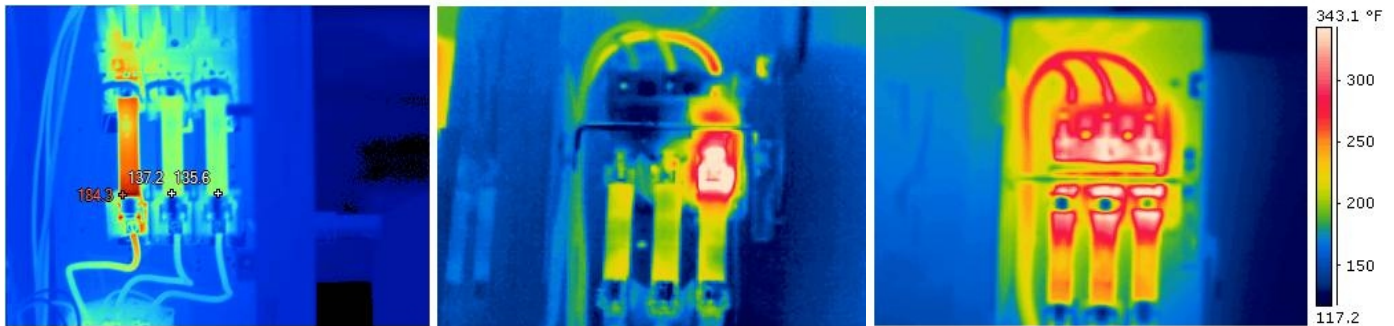
summer special from wesworth

About Thermal Imaging

Thermal Imaging is the process of photographing electrical equipment to detect abnormal heat patterns. The thermal camera warns of electrical problems including: Loose connections, Overloaded circuits, and Failing components. Thermal Imaging quickly pays for itself by allowing you to make repairs before a catastrophic failure.

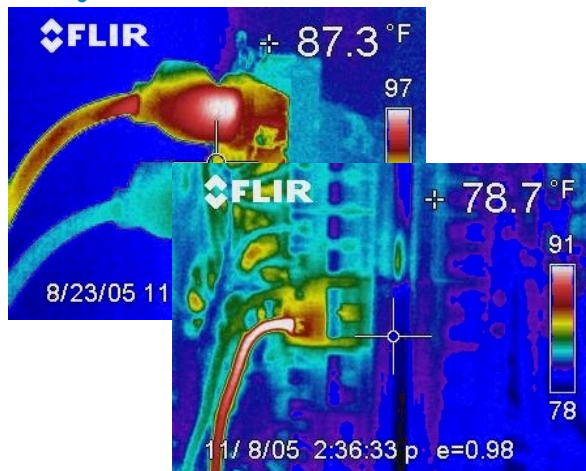
Wesworth is excited to announce that during July, we offer this service at drastically reduced price.

Protect your Building & Prevent Failures with thermal imaging from Wesworth



The bright white and red areas show critical problems

Reports & Rates



Terms & Conditions: \$99 minium charge, no coupons or vouchers valid, limited time slots available,

Our special \$99 scan, available only in July, includes 1 hour for our two man team to photograph your facility.

Wesworth will use its state-of-the-art camera to photograph your main panel and branch systems or special equipment.

Wesworth will present a report that shows the images, evaluates the risk, and proposes a no-obligation solution.

Customers with larger areas can request additional imaging at the \$99/hr rate.



WESWORTH ELECTRIC

POMPANO BEACH, FLORIDA

(954) 545-8171

BOCA: (561) 279-2929

BOYN: (561) 374-9500

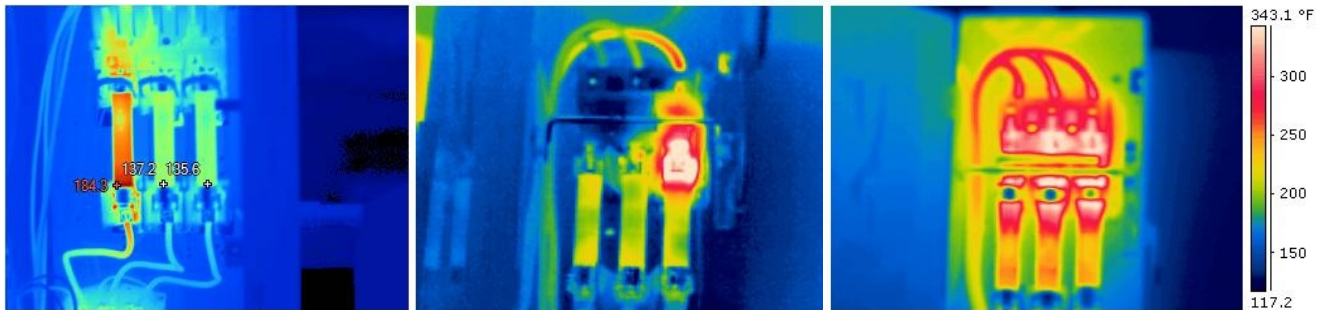
WWW.WESWORTH.COM

Thermal Imaging

Thermal Imaging is the process of photographing electrical equipment to detect abnormal heat patterns. Excessive heat in panels and disconnects discovered by the thermal camera warn of potential electrical problems. Loose connections, overloaded circuits, and failing parts can be discovered through this advanced process.

\$99
July Special
includes
1 hr of Imaging,
Report,
Analysis &
Recommendations

Protect your Building & Prevent Failures with thermal imaging from Wesworth



WESWORTH ELECTRIC

POMPANO BEACH, FLORIDA

(954) 545-8171 BOCA: (561) 279-2929 BOYN: (561) 374-9500

WWW.WESWORTH.COM